

Ral-GTP

Catalog Number: 26913

Gene Symbol: RAL

Description: Anti-Ral-GTP Mouse Monoclonal Antibody

Background: The Ras-like small G proteins, RalA and RalB, are important components of Ras signaling pathways, implicated in the initiation and maintenance of tumorigenic transformation, as well as vesicle transport, apoptosis, transcription, cell migration, and cell proliferation.

Immunogen: Recombinant full-length protein of active RalB

Tested Applications: IP, IHC, IF

Recommended Dilutions:

IP: 1 µg for 1~2 mg total cellular proteins

IHC, IF: 1:50-1:250

Concentration: 1 mg/ml

Host: Mouse

Clonality: Monoclonal

Isotype: IgG

Purity: Purified from ascites

Format: Liquid

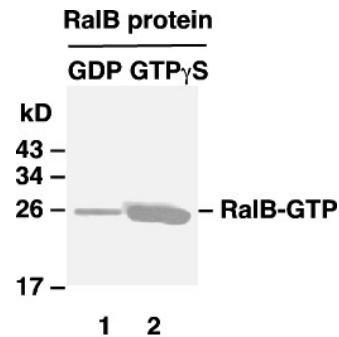
Preservative: No

Constituents: PBS (without Mg²⁺ and Ca²⁺), pH 7.4, 150 mM NaCl, 50% glycerol

Species Reactivity: Anti-Ral-GTP antibody recognizes active RalA and RalB of vertebrates

Storage Conditions: Store at -20°C. Avoid repeated freezing and thawing

Immunoprecipitation/Western blot



IP: anti-active Ral mAb

WB: anti-RalB pAb

Ral Activation Assay.

Purified RalB proteins were immunoprecipitated after treated with GDP (lane 1) or GTP γ S (lane 2). Immunoprecipitation was done with the anti-Ral-GTP monoclonal antibody (Cat. # 26913). Immunoblot was with anti-RalB rabbit polyclonal antibody (Cat. # 21033).

FOR RESEARCH USE ONLY. NOT FOR DIAGNOSTIC APPLICATIONS